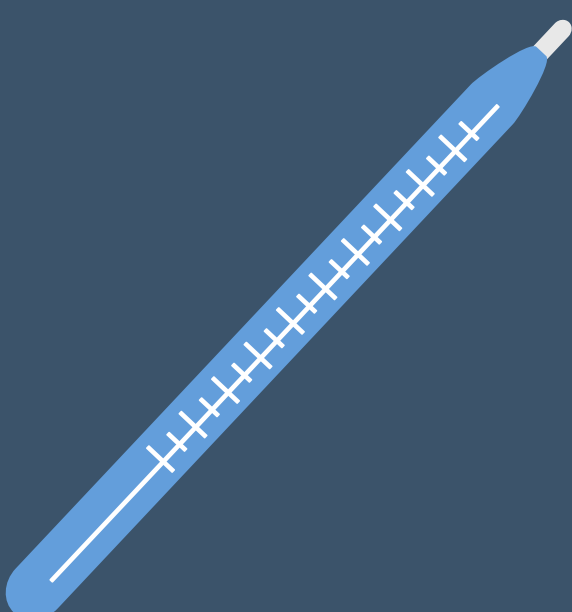


CONGRESSMAN MICHAEL WALTZ, 6TH DISTRICT,  
FLORIDA

# SERVICE ACADEMY MEDICAL

# DISQUALIFIERS

[WWW.WALTZ.HOUSE.GOV](http://WWW.WALTZ.HOUSE.GOV)



# EYES AND VISION

**VISION:** DISTANT VISUAL ACUITY NOT CORRECTABLE TO 20/20 IN ONE EYE AND 20/40 IN THE OTHER EYE IS DISQUALIFYING.

**MUSCLE BALANCE:** ESOTROPIA OVER 15 PRISM DIOPTERS, EXOTROPIA OVER 10 PRISM DIOPTERS, OR HYPERTROPIA OVER 5 PRISM DIOPTERS IS DISQUALIFYING.

**COLOR VISION:** INABILITY TO DISTINGUISH VIVID RED AND VIVID GREEN IS DISQUALIFYING.

**REFRACTIVE SURGERY:** PROCEDURES TO CHANGE THE REFRACTION (REFRACTIVE SURGERY) INCLUDING

BUT NOT LIMITED TO: LAMELLAR AND/OR PENETRATING KERATOPLASTY, RADIAL KERATOTOMY AND

ASTIGMATIC KERATOTOMY ARE DISQUALIFYING.

REFRACTIVE SURGERY PERFORMED WITH AN EXCIMER

LASER, INCLUDING BUT NOT LIMITED TO PHOTOREFRACTIVE KERATECTOMY (PRK), LASER EPITHELIAL

KERATOMILEUSIS (LASEK), AND LASER-ASSISTED IN SITU KERATOMILEUSIS (LASIK) IS DISQUALIFYING IF ANY OF THE FOLLOWING CONDITIONS ARE MET:

THE PRE-OPERATIVE REFRACTIVE ERROR EXCEEDED +8.00 OR -8.00 DIOPTERS (SPHERICAL EQUIVALENT) IN EITHER EYE; PRE-OPERATIVE ASTIGMATISM

EXCEEDED 3.00 DIOPTERS; AT LEAST A SIX-MONTH RECOVERY PERIOD HAS NOT OCCURRED BETWEEN

LAST REFRACTIVE SURGERY OR AUGMENTING PROCEDURE AND DODMERB MEDICAL EXAM; THERE

HAVE BEEN COMPLICATIONS AND/OR MEDICATIONS OR OPHTHALMIC SOLUTIONS REQUIRED; AND POST

SURGICAL REFRACTION IN EACH EYE IS NOT STABLE.

# EYES AND VISION

**REFRACTIVE ERROR:** MYOPIA OVER -8.00 DIOPTERS IN SPHERICAL EQUIVALENT, OR HYPEROPIA OVER +8.00 DIOPTERS EQUIVALENT IS DISQUALIFYING. ASTIGMATISM OVER 3 DIOPTERS IS DISQUALIFYING.

**RIGID CONTACT LENSES:** MUST BE REMOVED 21 DAYS PRIOR TO THE EYE EXAMINATION. THIS REQUIREMENT ALSO INCLUDES GAS-PERMEABLE LENSES. FOR THOSE APPLICANTS UNDERGOING ORTHO-KERATOLOGY OR CORNEAL REFRACTIVE TREATMENT, RIGID LENSES MUST BE REMOVED FOR 90 DAYS PRIOR TO THE EYE EXAMINATION.

**SOFT CONTACT LENSES:** MUST BE REMOVED 3 DAYS PRIOR TO THE EYE EXAMINATION. CANDIDATES WHO WEAR EYEGASSES OR CONTACT LENSES MUST HAVE THEIR EYEGASSES OR CONTACT LENSES WITH THEM AT THE TIME OF THEIR MEDICAL EXAMINATIONS



# HEAD, SCALP, FACE, AND NECK

ABNORMALITIES THAT INTERFERE WITH WEARING MILITARY EQUIPMENT OR ARE DISFIGURING ARE DISQUALIFYING.



# NOSE AND SINUSES

MALFORMATIONS OR DEFORMITIES THAT INTERFERE WITH SPEECH OR BREATHING, CHRONIC RHINITIS INADEQUATELY CONTROLLED, OR AN ALLERGY DESENSITIZATION PROGRAM WITHIN ONE YEAR OF ACCESSION ARE DISQUALIFYING



# EARS AND HEARING

MODERATE HEARING LOSS IN THE 500 TO 4000 HZ FREQUENCIES, A HISTORY OF MIDDLE EAR SURGERY, ABNORMALITIES OF THE EXTERNAL EAR, THE USE OF HEARING AIDS, A PERFORATED EARDRUM (INCLUDING A RETAINED TYMPANOSTOMY TUBE) OR A PERFORATED EARDRUM SURGICALLY REPAIRED WITHIN 120 DAYS OF THE DODMERB PHYSICAL EXAM WILL RESULT IN MEDICAL DISQUALIFICATION



# LUNGS, ASTHMA, AND CHEST

HISTORY OF PNEUMOTHORAX WITHIN THE PAST YEAR, IF DUE TO SIMPLE TRAUMA OR SURGERY, OR A HISTORY WITHIN THE PAST THREE YEARS IF SPONTANEOUS; ASTHMA, INCLUDING REACTIVE AIRWAY DISEASE; EXERCISE-INDUCED BRONCHOSPASM OR ASTHMATIC BRONCHITIS, RELIABLY DIAGNOSED AFTER THE 13TH BIRTHDAY ARE DISQUALIFYING. A POSITIVE TUBERCULOSIS SKIN TEST IS DISQUALIFYING, IF NOT TREATED.

INDIVIDUALS WHO HAVE A NEGATIVE QUANTIFERON GOLD TEST ARE NOT DISQUALIFIED. INDIVIDUALS TAKING PROPHYLACTIC CHEMOTHERAPY BECAUSE OF RECENT SKIN TEST CONVERSION ARE NOT DISQUALIFIED.





# SKIN

DISQUALIFICATIONS: A VERIFIED HISTORY OF PSORIASIS;  
ECZEMA OR ATOPIC DERMATITIS AFTER THE 9TH BIRTHDAY;  
PILONIDAL CYST WITH MASS OR DISCHARGING SINUS.  
TREATMENT WITH ACCUTANE IS TEMPORARILY DISQUALIFYING  
UNTIL EIGHT WEEKS POST-THERAPY





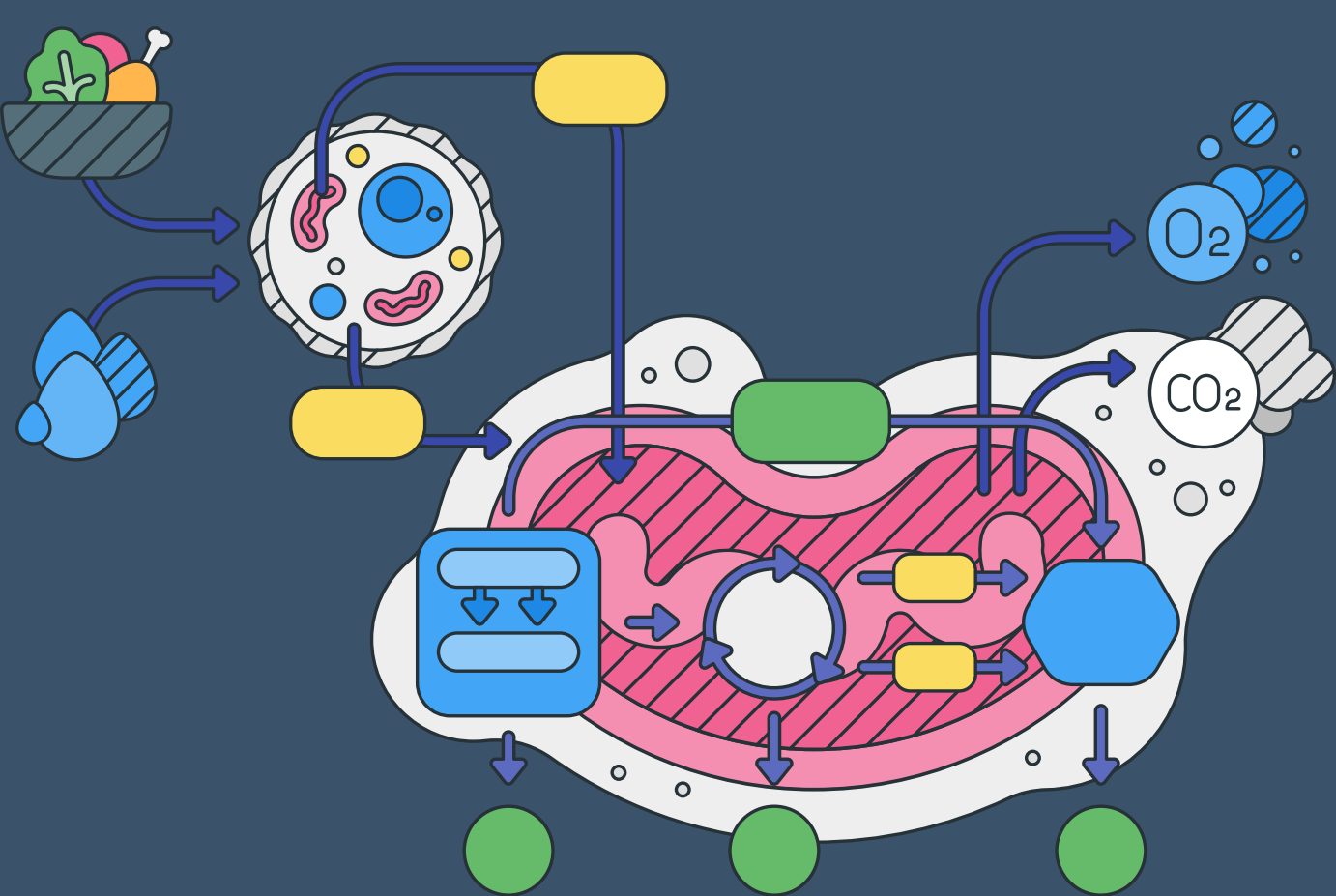
# HEART AND VASCULAR SYSTEM

DISQUALIFICATIONS: HISTORY OF HYPERTENSION, VALVULAR, SEPTAL, CONGENITAL OR OTHER DEFECTS. SUPRAVENTRICULAR TACHYCARDIA IS DISQUALIFYING UNLESS THERE IS NO RECURRENCE DURING THE PRECEDING TWO YEARS WHILE OFF MEDICATION OR POST ABLATION.



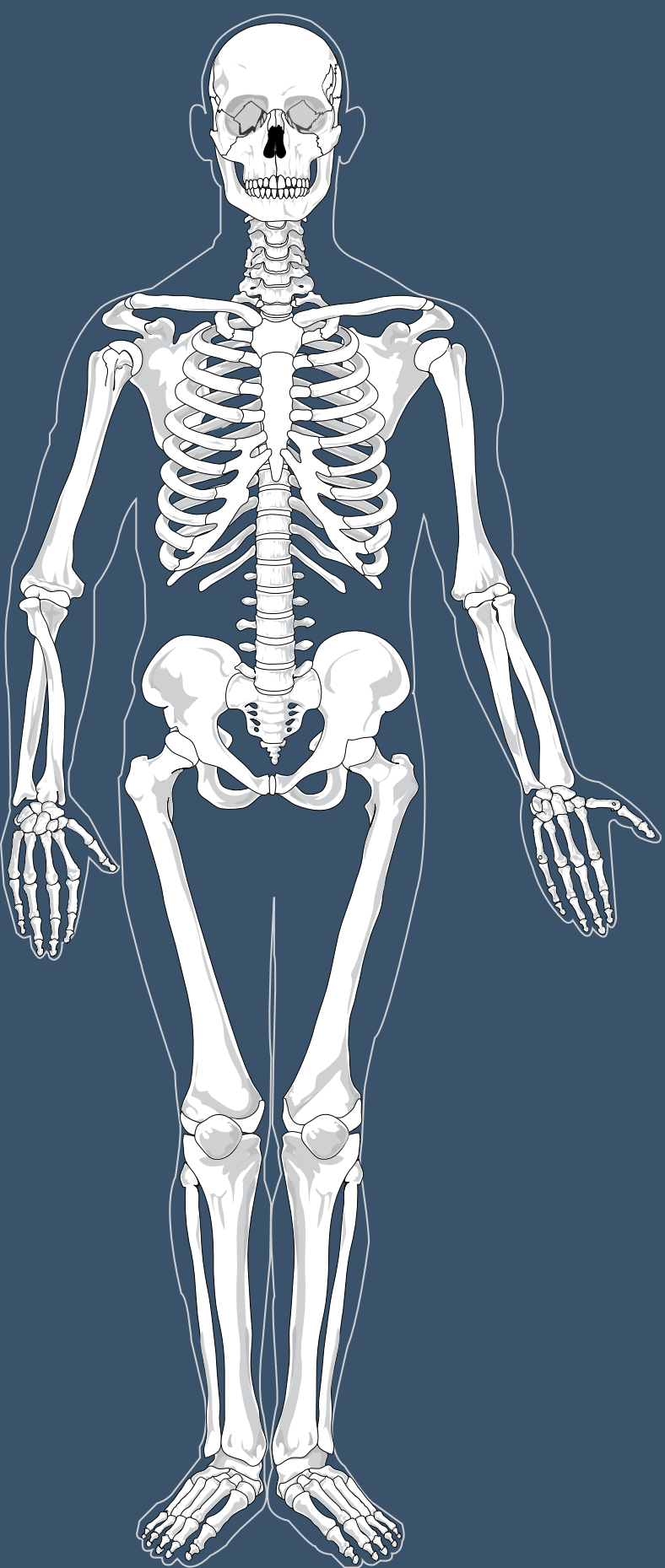
# ENDOCRINE AND METABOLISM

DISQUALIFICATIONS: A HISTORY OF THYROIDECTOMY; CURRENT GOITER; HISTORY OF HYPERTHYROIDISM; THYROIDITIS, HYPERPARATHYROIDISM, HYPOPARATHYROIDISM, OR DIABETES MELLITUS. HYPOTHYROIDISM, IF UNCONTROLLED BY MEDICATION, IS DISQUALIFYING.



# SPINE AND MUSCULOSKELETAL

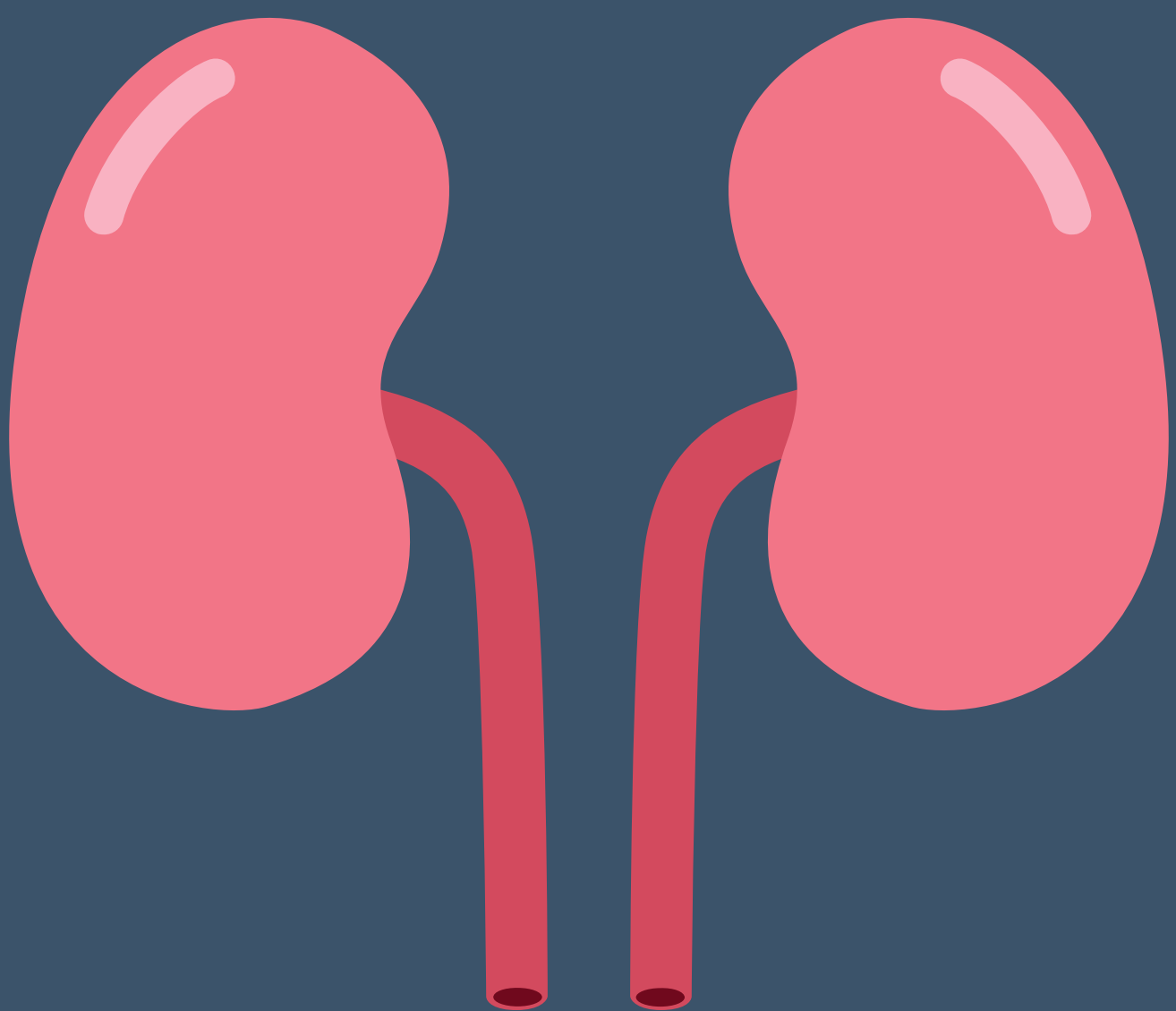
DISQUALIFICATIONS: SCOLIOSIS, KYPHOSIS, OR LORDOSIS LIKELY TO IMPAIR NORMAL FUNCTION; HERNIATED DISC OR HISTORY OF OPERATION FOR THIS CONDITION; HISTORY OF CHRONIC OR RECURRENT LOW BACK PAIN; FUSION OF THE SPINE; SPONDYLOLYSIS OR SPONDYLOLISTHESIS; SYMPTOMATIC PES PLANUS, OR RESIDUAL DEFORMITY FROM CLUBFOOT OR PES CAVUS; SURGICAL REPAIR OF ANTERIOR OR POSTERIOR CRUCIATE LIGAMENT INJURIES OF THE KNEE MUST BE EVALUATED AT LEAST SIX MONTHS AFTER SURGERY FOR STABILITY AND SYMPTOMS. A HISTORY OF ALL FRACTURES, SEVERE SPRAINS, AND ANY TYPE OF ORTHOPEDIC OR PODIATRIC SURGERY (INCLUDING ARTHROSCOPIC SURGERY) MUST BE DOCUMENTED IN APPLICATION MEDICAL EXAMINATION.



# GENITOURINARY SYSTEM

DISQUALIFICATIONS: HORSESHOE KIDNEY OR ABSENCE OF ONE KIDNEY; KIDNEY STONES; PROTEINURIA, HEMATURIA, OR PYURIA THAT IS PERSISTENT OR INDICATIVE OF CHRONIC RENAL DISEASE; HYDRONEPHROSIS; ATROPHY OR ABSENCE OF ONE OR BOTH TESTICLES; UNDESCENDED TESTICLE.

HYDROCELE/VARICOCELE WILL BE EVALUATED. CONGENITAL ABSENCE OF THE UTERUS. IRREGULARITIES OF THE MENSTRUAL CYCLE, INCLUDING HEAVY MENSES, BLEEDING BETWEEN MENSES, OR LACK OF MENSES WILL BE REVIEWED AND EVALUATED. SEVERE DYSMENORRHEA, ENDOMETRIOSIS, PREGNANCY ARE DISQUALIFYING.



# GASTROINTESTINAL SYSTEM

DISQUALIFICATIONS: HISTORY OF ULCER; GASTROESOPHAGEAL REFLUX DISEASE; REGIONAL ENTERITIS (CROHN'S), ULCERATIVE COLITIS OR OTHER INFLAMMATORY BOWEL DISEASE; GALLBLADDER DISEASE; CHRONIC HEPATITIS, INCLUDING HEPATITIS B OR C CARRIERS.

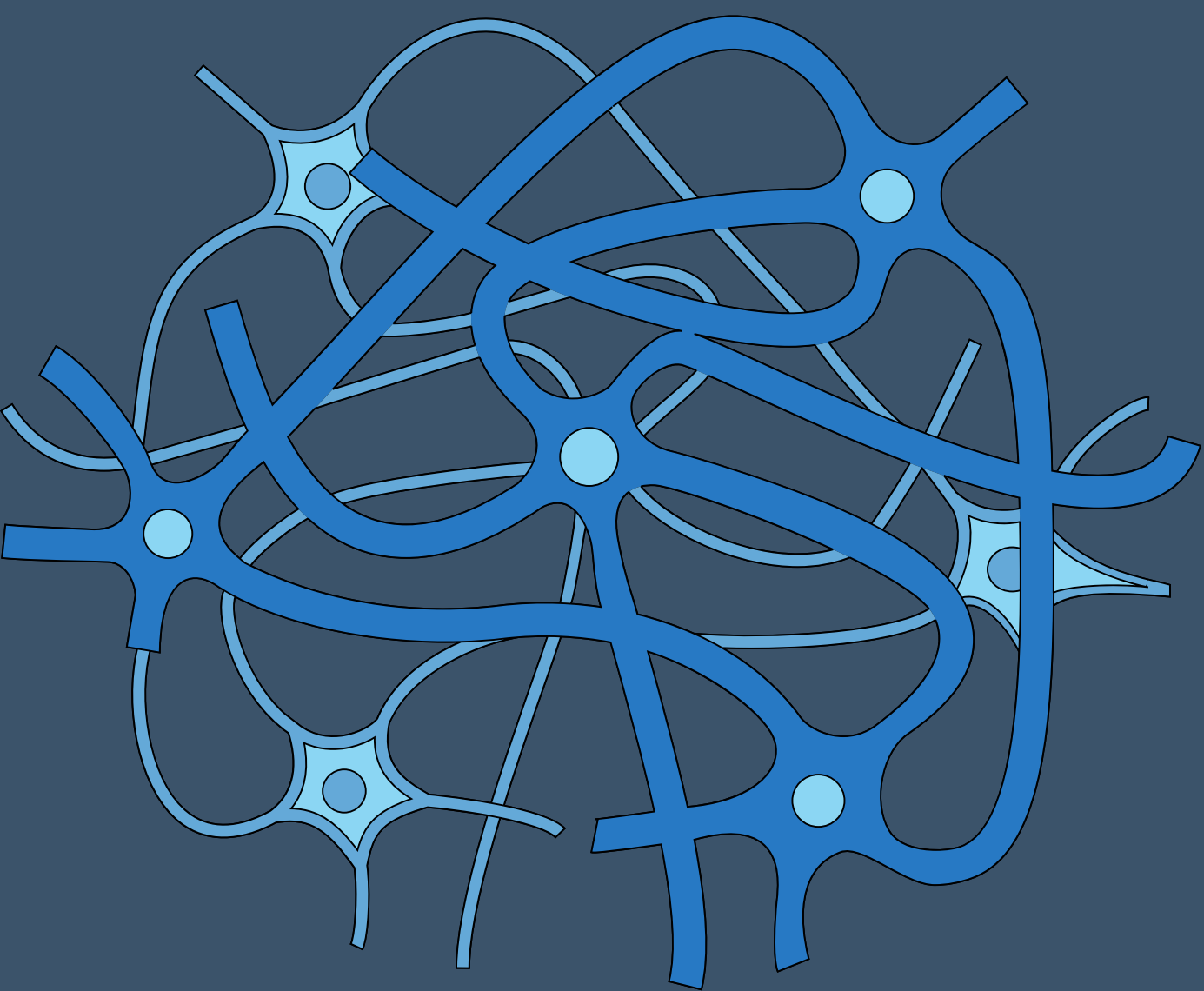
CURRENT HERNIA OR HISTORY OF SURGERY FOR HERNIA WITHIN PRECEDING SIX MONTHS IS TEMPORARILY DISQUALIFYING.





# NERVOUS SYSTEM

DISQUALIFICATIONS: DIAGNOSED SEIZURE DISORDER SINCE THE AGE OF 5; ANTICONVULSANT MEDICATIONS WITHIN FIVE YEARS OF THE EXAMINATION; HISTORY OF UNEXPLAINED UNCONSCIOUSNESS; DOCUMENTED HISTORY OF HEADACHES WITHIN THE PAST THREE YEARS THAT INTERFERE WITH DAILY FUNCTIONS OR REQUIRE MEDICAL TREATMENT. HISTORY OF HEAD INJURY RESULTING IN UNCONSCIOUSNESS WILL BE EVALUATED AND MAY REQUIRE A COMPLETE NEUROLOGICAL EVALUATION INCLUDING ELECTROENCEPHALOGRAM



# PSYCHIATRIC

HISTORY OF ACADEMIC SKILLS OR PERCEPTUAL DEFECTS THAT INTERFERE WITH WORK OR SCHOOL MAY BE QUALIFIED IF SUCCESSFUL SCHOOL AND WORK PERFORMANCE CAN BE DEMONSTRATED WITHOUT UTILIZATION OR RECOMMENDATION OF ACCOMMODATIONS WITHIN THE PREVIOUS 12 MONTHS. USE OF STIMULANT MEDICATION IN THE PREVIOUS 12 MONTHS TO IMPROVE OR MAINTAIN ACADEMIC SKILLS (E.G. RITALIN, ADDERALL) IS DISQUALIFYING.

HISTORY OF ATTEMPTED SUICIDE OR OTHER SUICIDE BEHAVIOR; PSYCHONEUROSIS; PERSONALITY DISORDERS; OTHER DISORDERS OF EMOTION, BEHAVIOR, THOUGHT, MOOD; OR SUBSTANCE MISUSE WILL BE EVALUATED AND MAY BE CAUSE FOR DISQUALIFICATION.

STUTTERING, EATING DISORDERS, AND SLEEPWALKING ARE DISQUALIFYING.





# DENTAL

ACTIVE ORTHODONTIC APPLIANCES ARE DISQUALIFYING. RETAINER APPLIANCES ARE PERMISSIBLE, PROVIDED ALL ORTHODONTIC TREATMENT HAS BEEN SATISFACTORILY COMPLETED.

PERFORATION(S) OF THE HARD PALATE; CLEFT LIP, UNLESS SATISFACTORILY REPAIRED BY SURGERY, ARE DISQUALIFYING

